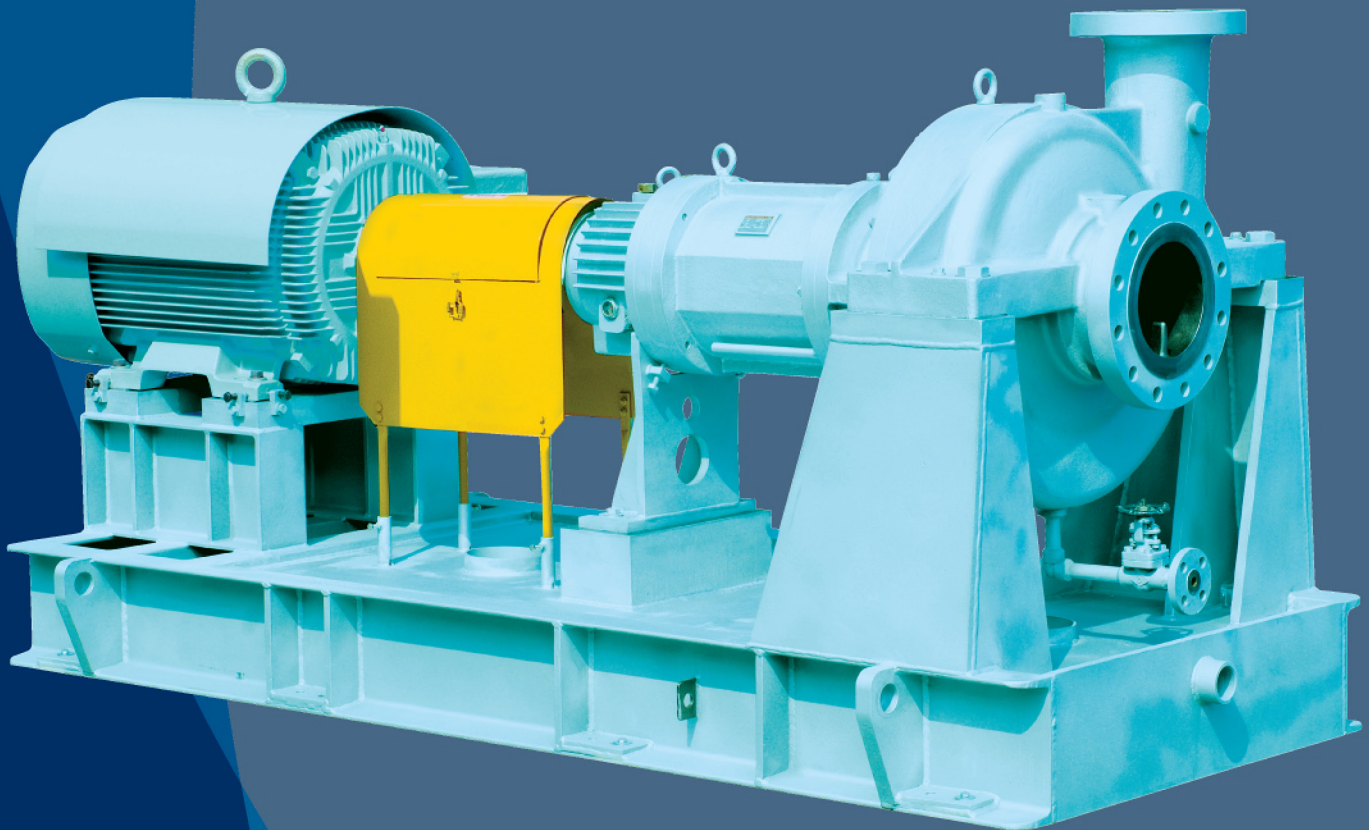


API 685, 2nd Ed. Magnetic Drive Process Pump (OH2)

TMP Series

API 685, 2nd Ed. Magnetic Drive Process Pump (OH2)



TRUFLO[™]
QUALITY • VALUE • SERVICE

TMP SERIES

API 685, 2nd Ed. Magnetic Drive Process Pump (OH2)

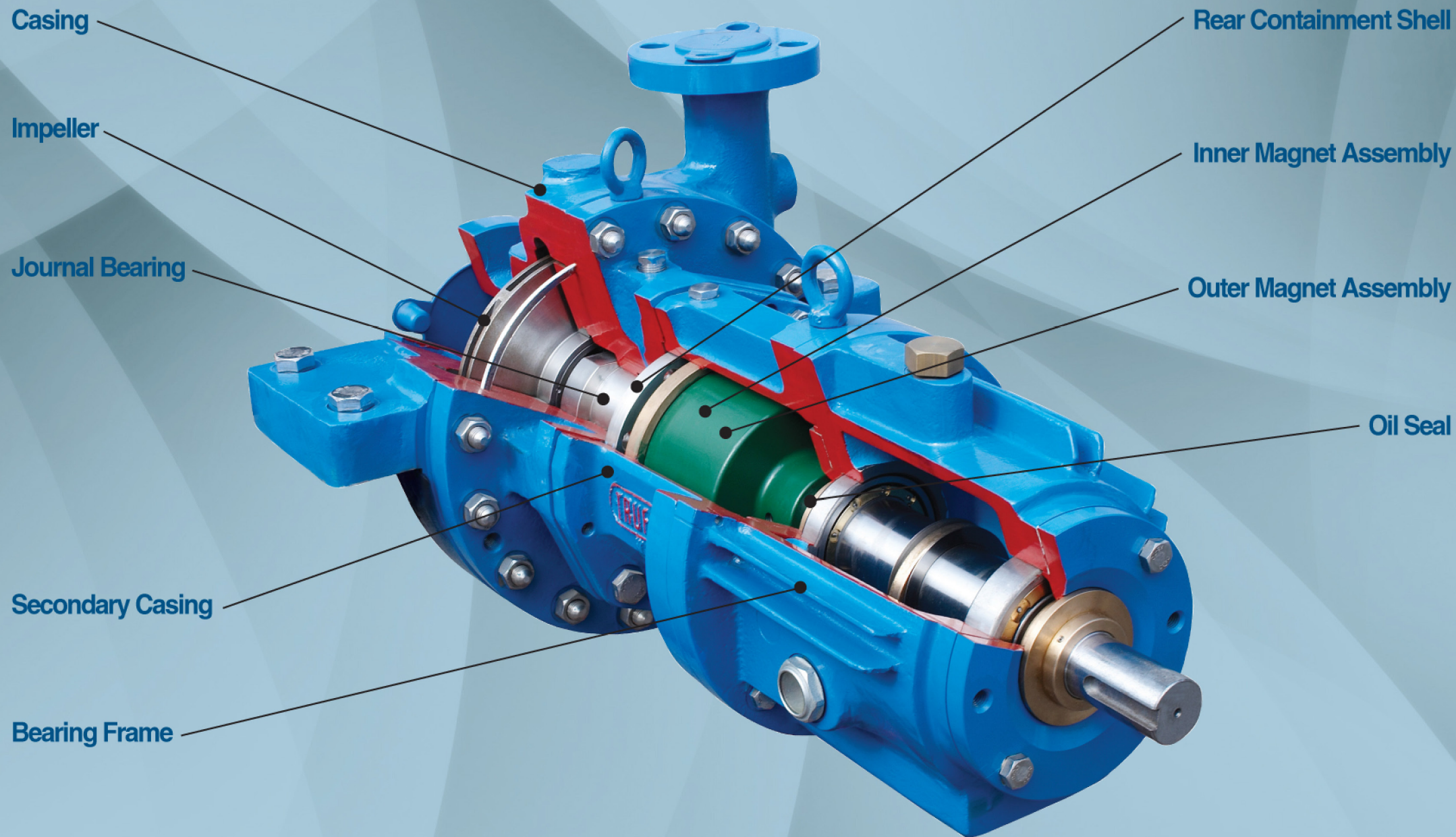
- Max.Capacity : 600m³/h (2600GPM)
- Max.Head : 340m (1120ft)
- Temperature : 300°C (10200°F)
- Allowed Pressure : 24kg/cm² (340psi)
- Power : 280kw (380HP)
- Material : DCI, WCB, CF8, CF8M, CD4M, CN7M, CA6NM, CF8M Etc.
- Conforms to API 685 for sealless pump
- Standard Sm2 Co17 magnet
- Design ensures safe, leak free operation
- Increased efficiency, Low running costs.
- Parts compatibility between the same pump group.
- No costly seal support systems to maintain

In recent year, laws and regulations for environment are getting more tough and severe. Therefore process industries has to protect leakage from equipment. Magnetic drive pump is the one of solutions. Magnetic drive pump has no dynamic seals in structure. That means there are no route to leak. Also, Magnetic drive pump has simple structure for maintenance. It has very low life cost than other types of pump.

TMP series of TRUFLO pump is designed to meet API 685 2nd edition. This series has a broad range of size and materials. Also, TMP series has good interchangeability and good features for easy maintenance.

APPLICATION

- _ Refineries
- _ Liquid gas plants
- _ Chemical and petrochemical industries
- _ Refrigeration and heat engineering
- _ Power stations
- _ Tank installations
- _ Pharmaceutical industries
- _ Fibers industries



CASING

- Standard 300lb RF flanges.
- Tangential Discharge.

IMPELLER

- Fully enclosed type.
- Investment casting.

JOURNAL BEARING

- Standard material—Silicone carbide.

REAR CONTAINMENT SHELL

- Wide choice of material depend on application

INNER MAGNET ASSEMBLY

OUTER MAGNET ASSEMBLY

- Strong rare earth magnet(SM2CO17)
- Maximum operating temperature:300°C

SAFETY DEVICE

- Protect rear containment shell damage by outer magnet in case of bearing failure.

SECONDARY CASING

- Secured liquid in case of primary casing failure.

OIL SEAL

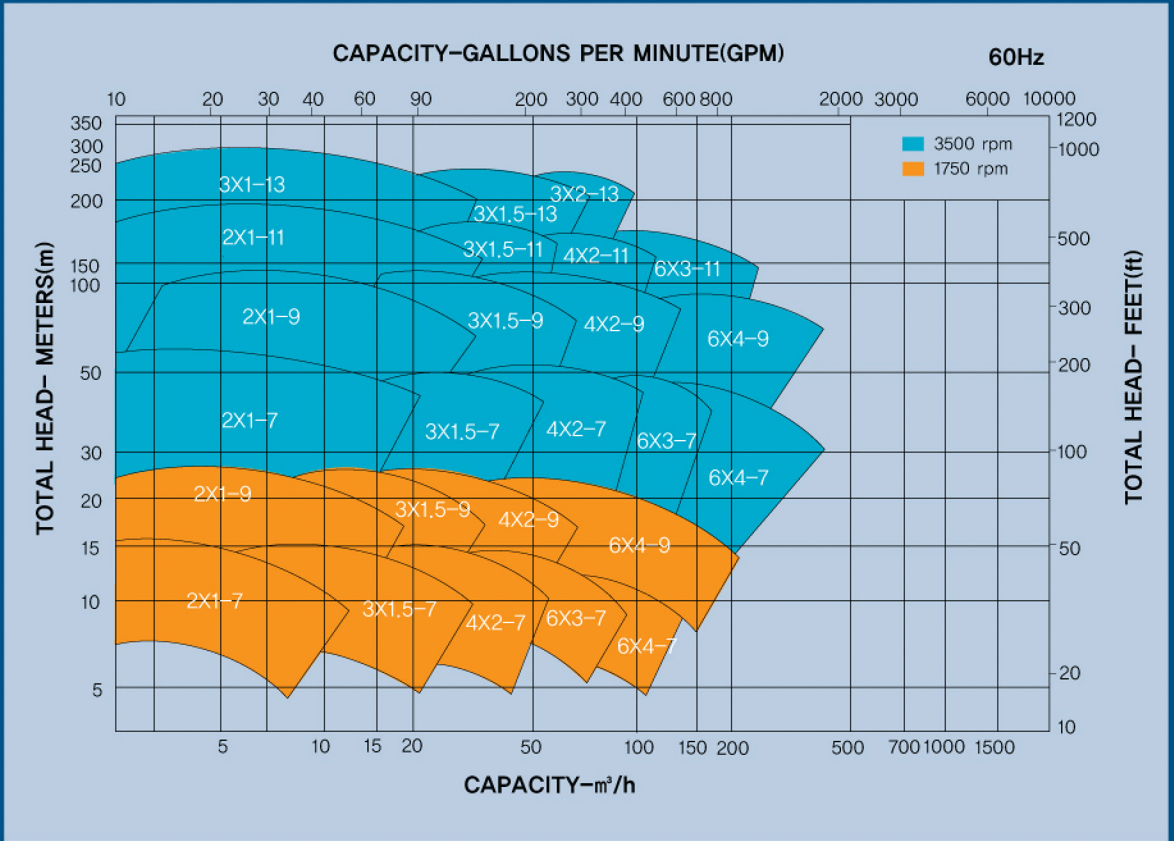
- Special designed labyrinth type oil seal

BEARING FRAME

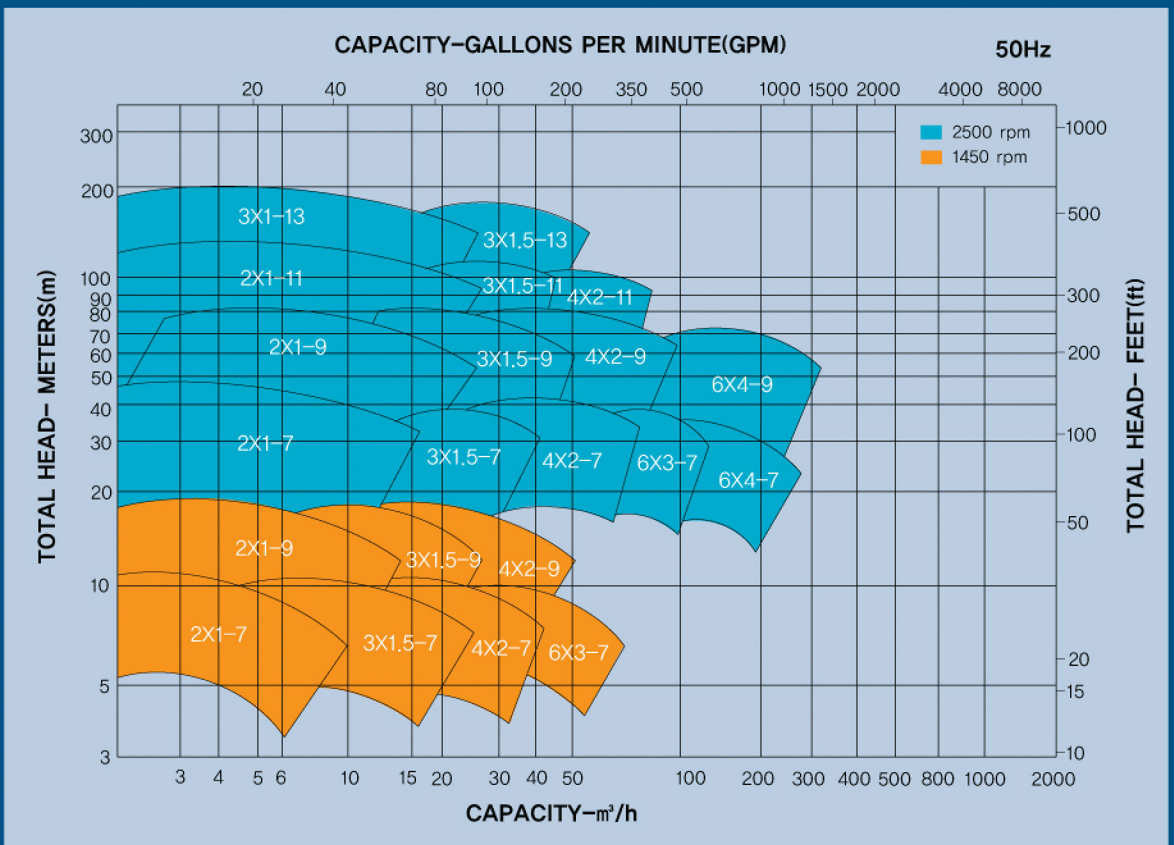
API 685, 2nd Ed. Magnetic Drive Process Pump (OH2)

PUMP SELECTION GUIDE

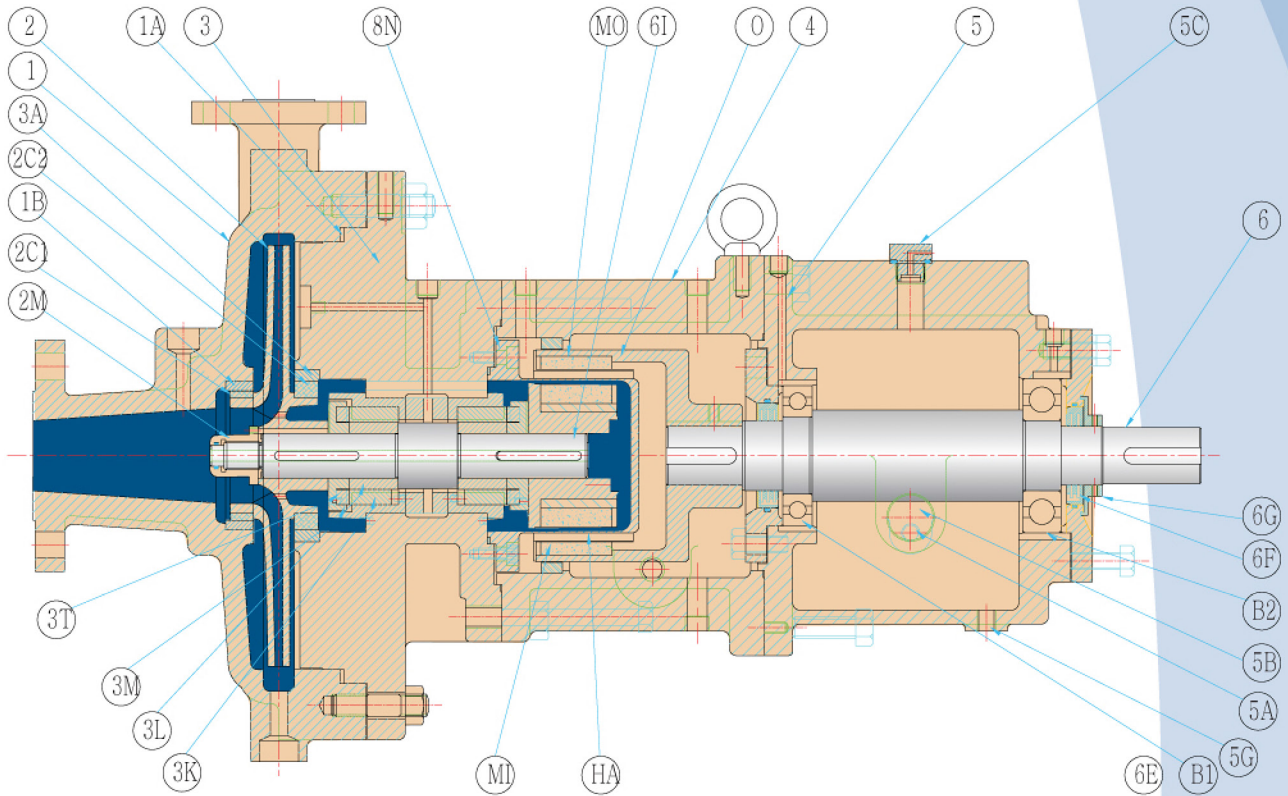
3500/1750 RPM



2500/1450 RPM



SECTIONAL



NO	NAME OF PART
8N	CONTAINMENT SHELL
6I	INNER SHAFT
6G	DEFLECTOR
6F	LABRYINTH SEAL-OUT
6E	LABRYINTH SEAL-IN
6	SHAFT(DRIVE END)
5G	OIL DRAIN PLUG
5C	OIL CAP

NO	NAME OF PART
5B	SIGHT GLASS
5A	OILER
5	BEARING FRAME
4	ADAPTOR
3T	THRUST RING SHELL
3S	MAIN BUSH SHELL
3M	THRUST RING
3L	SLEEVE BEARING

NO	NAME OF PART
3K	MAIN BUSH
3A	COVER WEAR RING
3	END COVER
2M	IMPELLER NUT
2C2	IMPELLER WEAR RING(R)
2C1	IMPELLER WEAR RING(F)
2	IMPELLER
1B	CASING WEAR RING

NO	NAME OF PART
1A	GASKET(CASING)
1	CASING
O	OUTMAG SHELL
MO	OUTER MAGNETIC
MI	INNER MAGNETIC
MA	IN MAG CAN
B2	OUTBOARD BEARING
B1	INBOARD BEARING

Truflo Pumps, Inc.

7105 Cessna Drive
Greensboro, NC 27409

Ph: (336) 664-9225
Fax: (336) 664-1353

E-Mail: Sales@TRUFLO.com
Website: www.TRUFLO.com